



G-PROJECT™

# G-GRIP

PORTABLE WIRELESS SPEAKER

 **Bluetooth®**



Rechargeable Battery  
8 Hours Play Time



Compact & Powerful  
Bass Boom Radiator



GRP Glass-Reinforced  
Polymer Chassis



G-PROJECT™

# Welcome to G-PROJECT™

Thanks for purchasing a G-GRIP and joining the G-Project. With just the right combination of performance, durability, features, and style at the right price, our goal is to provide rugged speakers and accessories that fit your modern lifestyle. We hope you agree.

For more info, please visit our website at [\*\*www.enterG-project.com\*\*](http://www.enterG-project.com)

## PACKAGE CONTENTS:

- G-GRIP
- AC Power Adapter
- Micro USB Charging Cable
- Wrist Strap
- 3.5mm Line In Audio Cable
- User Guide

# G-GRIP

PORTABLE WIRELESS SPEAKER

## IMPORTANT SAFETY NOTIFICATIONS



**CAUTION:** TO REDUCE THE RISK OF ELECTRIC SHOCK, DO NOT REMOVE COVER (OR BACK). NO USER-SERVICEABLE PARTS INSIDE. REFER SERVICING TO QUALIFIED SERVICE PERSONNEL.



**DANGEROUS VOLTAGE:** The lightning flash with arrowhead symbol, within an equilateral triangle is intended to alert the user to the presence of uninsulated dangerous voltage within the product's enclosure that may be of sufficient magnitude to constitute a risk of electric shock to persons.



**ATTENTION:** The exclamation point within an equilateral triangle is intended to alert the user to the presence of important operating and maintenance (servicing) instructions in the literature accompanying the appliance.

**NOTE:** Any unapproved changes or modifications will void the warranty.



G-PROJECT™

# IMPORTANT SAFETY INSTRUCTIONS

1. Read and keep these instructions
2. Follow all instructions and heed all warnings
3. Do not use G-GRIP near water or expose it to dripping or splashing
4. Clean only with a dry cloth
5. Do not block any ventilation openings
6. Do not place near any heat sources such as radiators, heat registers, stoves, or other devices (including amplifiers) that produce heat
7. Only use attachments or accessories approved by G-Project
8. Refer all servicing to qualified service personnel. Servicing may be required when:
  - a. G-GRIP has been damaged in any way or does not operate normally
  - b. the power supply cord or plug have been damaged
  - c. G-GRIP has been exposed to rain, moisture, or other liquids
  - d. objects have fallen into G-GRIP
  - e. G-GRIP has been dropped

## **WARNING:**

- Never remove the casing of G-GRIP
- Never lubricate any part of G-GRIP
- Never place G-GRIP on other electrical equipment

## **NOTICE FOR THE USA AND CANADA**

This device complies with Part 15 of the FCC Rules and RSS standard of Industry Canada. Operation is subject to the following two conditions:

1. this device may not cause harmful interference, and
2. this device must accept any interference received, including interference that may cause undesired operation.

This speaker has been tested and found to comply with the limits for a Class B digital device, pursuant to part 15 of the FCC Rules and ICES-003 of Industry Canada.

These limits are designed to provide reasonable protection against harmful interference in a residential installation. This speaker generates, uses, and can radiate radio frequency energy and, if not installed and used in accordance with the instruction manual, may cause harmful interference to radio communications.

However, there is no guarantee that interference will not occur in a particular installation. If this speaker does cause harmful interference to radio or television reception, which can be determined by turning the speaker off and on, the user is encouraged to try to correct the interference by one or more of the following measures:

- Relocate the receiving antenna
- Increase the separation between the speaker and the receiver
- Connect the speaker into an outlet on a circuit different from that to which the receiver is connected
- Consult the dealer or an experienced radio technician for help



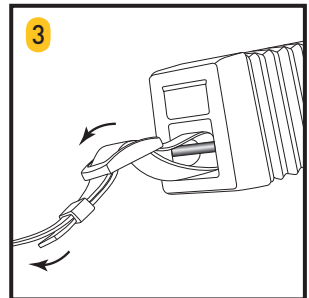
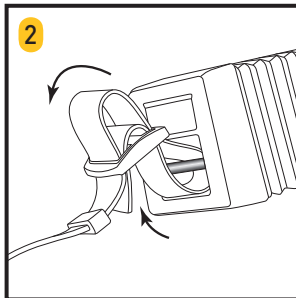
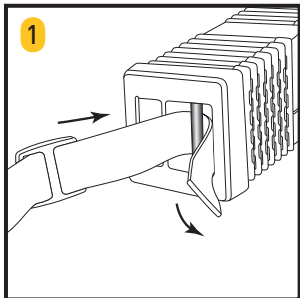
G-PROJECT™

## RF RADIATION EXPOSURE STATEMENT:

This speaker complies with FCC's and IC's RF radiation exposure limits set forth for an uncontrolled environment. The antenna(s) used for this transmitter must be installed and operated to provide a separation distance of at least eight inches from all persons and must not be placed near or operating in conjunction with any other antenna or transmitter. Users must ensure that eight inch separation distance will be maintained between the device (excluding its handset) and users.

**NOTICE:** Any changes or modifications made to this device that are not expressly approved by G-Project may void the user's authority to operate the equipment.

## WRIST STRAP ASSEMBLY

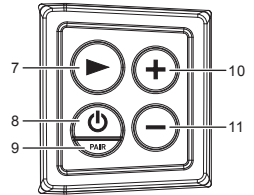
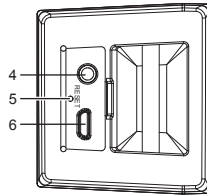
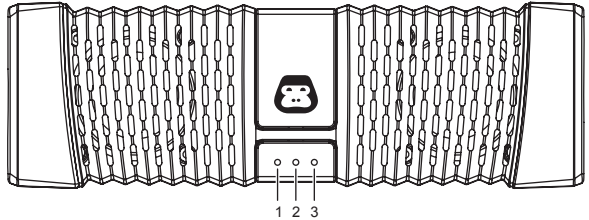


# G-GRIP

PORTABLE WIRELESS SPEAKER

## LOCATION OF CONTROLS

1. Power / Charging LED
2. Charging LED / Low battery indicator LED
3. Bluetooth LED
4. 3.5mm AUX Input
5. Reset Button
6. 5V DC Power Input
7. Mode / Play Button
8. Power Button
9. Pair Button
10. Volume + Button
11. Volume - Button





G-PROJECT™

# INDICATORS

## BLUETOOTH LED

When Bluetooth is in pairing mode, the Bluetooth LED will flash blue.

Once Bluetooth has paired successfully, the Bluetooth LED will turn solid blue.

If G-GRIP has not paired with another device after 30 minutes, it will stop trying to pair and turn off.

## POWER / CHARGING LED

The red and white LEDs indicate the following statuses:

| Power Adapter | Battery  | Power | White LED | Red LED                     | Status                     |
|---------------|----------|-------|-----------|-----------------------------|----------------------------|
| Connected     | Full     | OFF   | OFF       | OFF                         | --                         |
| Connected     | Not Full | OFF   | OFF       | ON                          | Battery charging           |
| Connected     | Full     | ON    | ON        | OFF                         | --                         |
| Connected     | Not Full | ON    | ON        | ON                          | Battery charging           |
| Not Connected | Not Full | ON    | ON        | OFF                         | Using battery power        |
| Not Connected | Low      | ON    | ON        | <i>Slow flash for 3 min</i> | Battery low                |
| Not Connected | Very Low | ON    | ON        | <i>Fast flash for 2 min</i> | Battery very low           |
| Not Connected | Empty    | OFF   | OFF       | OFF                         | Power off, cannot power on |



# G-GRIP

PORTABLE WIRELESS SPEAKER

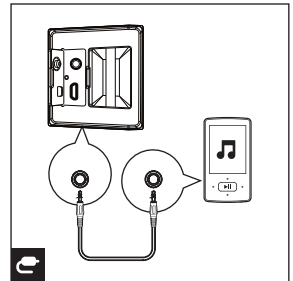
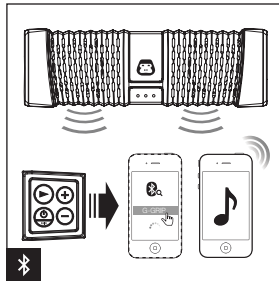
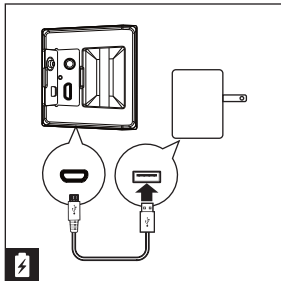
## CONNECTIONS and MODES

**CHARGING MODE (left)** - For a full charge, plug G-GRIP into your Power Adapter or computer via the micro USB charging cable (included)

**NOTE:** A full charge takes up to 3.5 hours

**BLUETOOTH MODE (center)** - Pair and connect your Bluetooth device (see the Pairing section for instructions) to stream audio wirelessly (make sure that no cable is connected to the AUX Input)

**AUX MODE (right)** - Connect a 3.5mm cable (included) from the AUX Input to your audio device and initiate playback





G-PROJECT™

# OPERATION

## POWER ON / OFF

- 1 In Standby mode, press the Power Button to turn G-GRIP on
- 2 If a 3.5mm cable is connected to the AUX Input, G-GRIP will default to AUX mode
- 3 If no cable is connected to the AUX Input, G-GRIP will switch to Bluetooth mode and begin Bluetooth pairing
- 4 While G-GRIP is on, press the Power Button again to turn G-GRIP off
- 5 The speaker will automatically turn off if there is no audio playback for 30 minutes

## VOLUME CONTROL

- The volume level can be set from 0 - 15 (the default level is 10)
- G-GRIP will remember the volume setting when it is turned off

## PLAYBACK MODES

- If a 3.5mm cable is connected to the AUX Input, G-GRIP will default to AUX mode
- If no cable is connected to the AUX Input, G-GRIP will switch to Bluetooth mode and begin Bluetooth pairing
- To return to AUX mode, simply connect a 3.5mm cable to the AUX Input

## BLUETOOTH OPERATION

Pair with Bluetooth\* capable devices to stream stereo audio wirelessly for music, movies, video games and apps.

### PAIRING

- 1 In Standby mode, press the Power Button to turn G-GRIP on and begin Bluetooth pairing (make sure that no cable is connected to the AUX Input). The Bluetooth LED will flash blue
- 2 On your Bluetooth device, select “G-GRIP” from the device list to pair with it (no password is required). Once Bluetooth has paired successfully, the Bluetooth LED on G-GRIP will turn solid blue
- 3 To clear the Bluetooth memory on G-GRIP, turn G-GRIP on and hold the Pairing Button for a few seconds

**notes:** If the 3.5mm cable is plugged into the AUX Input while G-GRIP is pairing or is already paired with a device, G-GRIP will quit Bluetooth mode.

If the Pairing Button is pressed again while the 3.5mm cable is still connected to the AUX Input, G-GRIP will change to Bluetooth pairing mode.

\* Compatible up to 30' range with A2DP Bluetooth capable devices.



G-PROJECT™

## MUSIC PLAYBACK

- Pressing the Mode / Play Button while in Bluetooth mode will play or pause the audio playback on your Bluetooth device
- Pressing the Mode / Play Button quickly 2x while in Bluetooth mode will skip to the next track on your Bluetooth device
- Pressing the Mode / Play Button quickly 3x while in Bluetooth mode will skip to the previous track (or to the beginning of the current track depending on the paired device)

## SPECIFICATIONS

|                                |  |
|--------------------------------|--|
| Power Adapter Input .....      | 100 - 240V AC, 50Hz/60Hz                         |
| Power Adapter Output .....     | 5V DC, 1300mA, Center positive                   |
| Bluetooth v2.1 compliant ..... | supports Enhanced Data Rate (EDR) and A2DP       |
| Battery.....                   | 3.7V, 800mAh, Rechargeable Lithium-ion           |
| Power Output .....             | 2W x 2   |
| Output Level .....             | 85dB at 0.5m                                     |
| Frequency Response .....       | 60Hz - 20kHz                                     |
| Speakers .....                 | 1.5" x 2 acoustic drivers with Neodymium magnets |
| Radiator .....                 | Rear firing passive radiator                     |
| Battery Playback Time.....     | Up to 8 hours                                    |
| Battery Recharging Time .....  | ~3.5 hours                                       |

## TROUBLESHOOTING

| Issue                           | Solution   |
|---------------------------------|--|
| Distortion                      | Lower the volume on your G-GRIP and/or audio source  |
| Not loud enough                 | Turn up the volume on your G-GRIP and/or audio source  |
| Intermittent sound              | Recharge the batteries using the included Power Adapter  |
|                                 | If using Bluetooth, move the audio source and G-GRIP closer together (within the 30' range)  |
|                                 | Unpair G-GRIP from your Bluetooth device ( <i>check with your device manufacturer for more information about Bluetooth pairing</i> ), then re-pair following the steps in the section BLUE TOOTH OPERATION |
| Cannot play audio via Bluetooth | Confirm your device is A2DP Bluetooth compatible. Ensure that both your Bluetooth device and G-GRIP are not connected to any other devices   |
|                                 | If your G-GRIP is connected to a Line In source, the Bluetooth will not function. Unplug the 3.5mm Line In cable and press the Pair Button to switch to Bluetooth  |
|                                 | Unpair G-GRIP from your Bluetooth device ( <i>check with your device manufacturer for more information about Bluetooth pairing</i> ), then re-pair following the steps in the section BLUE TOOTH OPERATION |



**G-PROJECT™**

For further assistance, please visit our website at [www.enterG-project.com](http://www.enterG-project.com)  
or contact customer service at [support@enterG-project.com](mailto:support@enterG-project.com) or **1-855-896-1795**

Life Lab International Ltd.